



CPT COLD AIR INTAKE SYSTEM

Installation Instructions

Part # CPT-436

2 piece 2.75"

04-06 Mitsubishi Lancer

Ralliart Edition 2.4L (MT Only)

Check Point Tuning
Fullerton, CA 92831

CPT-436

04-06 Lancer Ralliart MT (2.75")

Installation Instructions

We recommend you have a trained professional install this product. Please be sure to read and understand ALL these instructions prior to installing this product.

Note: This intake pipe kit requires the removal and reinstallation of emissions related components. If you are not familiar with the installation and/or the operation of these components please refer this installation to a qualified professional.

1. Getting started

- Make sure the vehicle is parked on a level surface
- Set the parking brake
- If the engine has ran in the last 2 hours, let it cool down
- If your radio has a security code, MAKE SURE YOU HAVE IT before you disconnect your vehicle's power
- Disconnect negative battery terminal
- Jack up the vehicle and remove the driver side wheel.

2. Removing the stock air intake system

Before removing any of the O.E. components label each individual part so that no components become mixed up during the installation process.

- Disconnect the breather hose from the right side of your engine's valve cover.
- To the right of the breather hose, unclip the throttle cable that is connected to the stock air box.
- Use a Phillips screw driver or similar object to disengage the clips holding the stock inlet scoop to the radiator support. Pull the stock inlet scoop out and remove from the vehicle.
- Unplug the MAF sensor harness from the MAF sensor located on top of the stock inlet pipe by the stock air box.
- Carefully unbolt the MAF Sensor from the removed inlet pipe and set aside for reinstallation with your CPT intake.
- Use a flat head screw driver to disengage the clips holding the MAF sensor wire running long-ways over the stock air box
- On the opposite side of the air box towards the front of the vehicle, unbolt the two bolts holding in the stock air box.
- Loosen the Phillips screw on the hose clamp holding the stock inlet pipe to the throttle body.
- Remove the stock air box and inlet pipe from the vehicle.
- Locate the stock air box bracket by the battery and unclip the wiring harness attached to it. Undo the 3 bolts on the bracket and remove the bracket from the vehicle.
- Beneath the vehicle on the driver side, locate the splash gauge attached to the rear of the bumper. Undo the 3 clips holding the splash guard in and remove the splash guard in order to clear a path for the cold air intake.

3. Installing the CPT Cold Air Intake

When installing the cold air intake system do not completely tighten the hose clamps or mounting tab hardware until instructed to do so later in these instructions. Be sure the CPT Piping and Filter are clean and free of debris before beginning installation.

- Locate the upper CPT pipe (the pipe with one bend) and install the stock MAF sensor onto the mount with the included bolts.
- On the opposite end of the same pipe, install the nipple end of the pipe onto the throttle body (MAF sensor up) with one of the rubber hoses and 2 hose clamps.
- On the lower pipe, if not already installed, install the rubber o-ring onto the drainage port on the curve of the intake.
- On the opposite the end of the lower pipe (the bend that is perpendicular to the rest of the pipe), install the remaining rubber hose and 2 hose clamps.
- Test fit the lower pipe into the vehicle to locate the bolt hole where you will need to install the rubber mount. The bracket on the lower pipe will line up with a bolt on the transmission slave cylinder bracket. Install the included rubber mount into this hole.
- Install the lower pipe onto the end of the upper pipe and onto the rubber mount without fully tightening (final adjustments may need to be made). The radiator hose may need to be rotated in order to accommodate the bottom portion of the pipe.
- Beneath the vehicle, install the included CPT filter onto the end of the CPT intake pipe about 2 inches over the CPT intake pipe.
- Plug in the MAF sensor harness into the MAF sensor. Install the included breather tube between the nipple on the intake and the valve cover. Attach the throttle cable to the hole bracket next to the MAF sensor.
- Adjust the entire intake pipe so that it is touching no surfaces of the car.
- Connect the included hose from the nipple on the intake pipe to the fitting on the valve cover with hose clamps on either end.
- Tighten all clamps and connections.
- If included, install the C.A.R.B. E.O. Identification Sticker on to the intake pipe or on the inside of the hood near the device. This sticker MUST be placed somewhere on or near the device in plain view in order to pass a Smog Check inspection.

4. Re-assemble the vehicle

- Re-install the splash guard and plastic shield.
- Inspect the engine bay for any loose tools and check that all fasteners that were moved or removed are properly tightened.
- Reconnect the wheel and lower the vehicle.
- Reconnect the negative battery terminal.
- Start the vehicle and check for proper operation of all the components that were removed.

-END OF INSTRUCTIONS-

FAQ

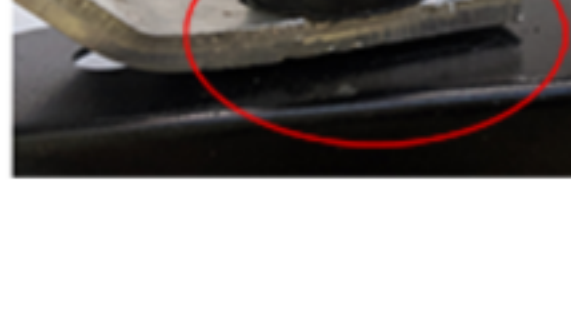
Why does my car have a check engine light after installation?

Disconnecting the battery during installation is an important step required to clear the ECU settings. After installation, it could take a mile or two for the vehicle to readjust to the new amount of airflow, and for the check engine light to clear.

If not, please check that the MAF sensor is facing the same direction as it was in your stock intake system, and that there are no holes or metal remnants near the MAF sensor that could be disrupting the air flow.

Why is my pipe or filter off by 1-2 inches?

Failure to install the vibramount correctly can throw off the alignment of the whole intake. The vibramount serves as a rubber spacer BETWEEN the intake bracket and your car (or heat shield) to absorb the vibrations that would otherwise damage and cause the bracket to break off.



Why is this pipe bigger than my engine bay and stock intake?

CPT intakes by design are often larger than your stock intake system. The point is to move the point where the filter is to get the coldest air possible, which usually means using a longer pipe to move the intake point towards the lower front of the vehicle.

Who do I contact if I have more questions?

For further assistance, please email us at sales@tunersdepot.com