



CPT COLD AIR INTAKE SYSTEM

Installation Instructions

Part #CPT-438

1 piece 2.75"

08-13 Mitsubishi Lancer,
11-13 Outlander Sport 2.0L 4cyl
09-15 Lancer 2.4L 4cyl (Automatic Transmission Only)

Check Point Tuning
Fullerton, CA 92831

CPT-438

2008-13 Mitsubishi Lancer
2011-13 Outlander Sport 2.0L 4cyl
09-15 Lancer 2.4L 4cyl (Automatic Transmission Only)

Installation Instructions

We recommend you have a trained professional install this product. Please be sure to read ALL these instructions prior to installation.

Note: This intake pipe kit requires the removal and reinstallation of emissions related components. If you are not familiar with the installation and/or the operation of these components please refer this installation to a qualified professional.

1. Preparation
 - a. Make sure the vehicle is parked on a level surface.
 - b. Set the parking brake.
 - c. Make sure the engine has cooled down for at least an hour.
 - d. If your radio has a security code, make sure you have it recorded before you disconnect your vehicle's power.
 - e. Disconnect the negative battery terminal.

2. Removing the stock air intake system

Before removing any of the O.E. components label each individual part so that no components become mixed up during the installation process.

- a. Remove the 2 plastic clips holding the intake scoop.
- b. Remove intake scoop.
- c. Remove the 10mm bolt attaching the factory air box to the car.
- d. Pinch the clamp attaching the crank case vent hose to the intake tube to detach from intake tube.
- e. Disconnect the MAF sensor harness.
- f. Remove 2 screws from the MAF sensor.
- g. Remove the MAF sensor.
- h. Loosen the hose clamp on the throttle body.
- i. Pull the intake hose off the throttle body then remove the factory intake assembly.

3. Installing the CPT Cold Air Intake

When installing the cold air intake system do not completely tighten the hose clamps or mounting tab hardware until instructed to do so later in these instructions. Be sure the CPT Piping and Filter are clean and free of debris before beginning installation.

- a. Press the 2.75" silicon elbow over the throttle body opening and secure with hose clamps.
- b. Loosely attach supplied extension bracket to the threaded hole used to secure the factory air box using a bolt.
- c. Secure a vibra mount to the other end of the extension bracket using supplied washer and nut.
- d. Install the CPT air filter onto the CPT intake pipe then secure using a hose clamp.
- e. Secure the MAF sensor to the CPT intake pipe using 2 screws.
- f. Install the CPT intake assembly to the throttle body and secure using a hose clamp, lining up the mounting bracket to the vibra mount.
- g. Position and tighten the hardware.
- h. Install the crank case vent hose onto the CPT intake pipe fitting and secure using the factory tension clamp.
- i. Reconnect MAF sensor harness.
- j. Position and adjust the cold air intake assembly for the best possible fit then tighten all the cold air intake assembly hardware as needed.

4. Re-assemble the vehicle

- a. Inspect the engine bay for any loose tools and check that all fasteners that were moved or removed are properly tightened.
- b. Reinstall the negative battery terminal.
- c. Start the vehicle and check for proper operation.
- d. Please note that your vehicles computer may act abnormally for the first few minutes of driving as it adjusts to the increased amount of airflow. Normal operation should resume after a few miles of driving.

-END OF INSTRUCTIONS-

FAQ

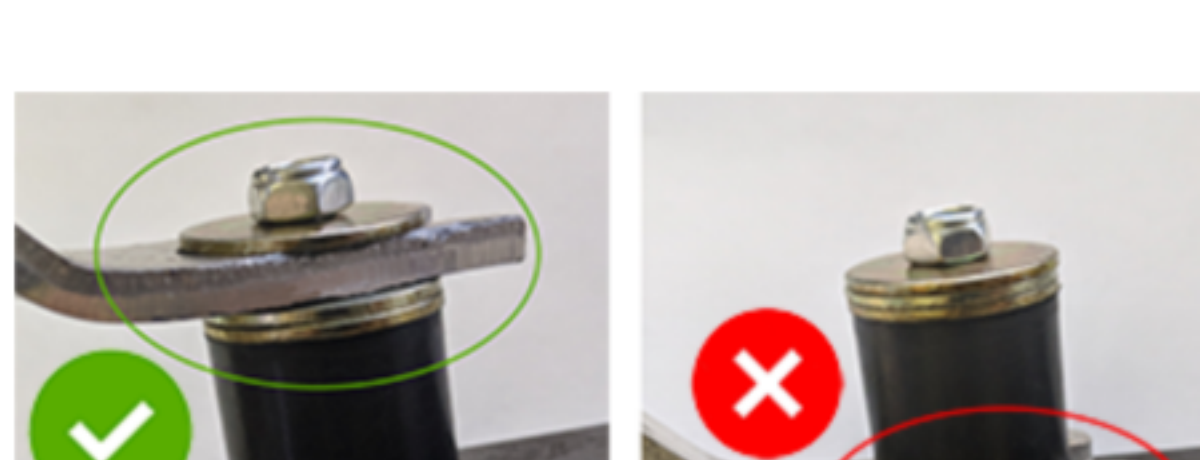
Why does my car have a check engine light after installation?

Disconnecting the battery during installation is an important step required to clear the ECU settings. After installation, it could take a mile or two for the vehicle to readjust to the new amount of airflow, and for the check engine light to clear.

If not, please check that the MAF sensor is facing the same direction as it was in your stock intake system, and that there are no holes or metal remnants near the MAF sensor that could be disrupting the air flow.

Why is my pipe or filter off by 1-2 inches?

Failure to install the vibramount correctly can throw off the alignment of the whole intake. The vibramount serves as a rubber spacer BETWEEN the intake bracket and your car (or heat shield) to absorb the vibrations that would otherwise damage and cause the bracket to break off.



Why is this pipe bigger than my engine bay and stock intake?

CPT intakes by design are often larger than your stock intake system. The point is to move the point where the filter is to get the coldest air possible, which usually means using a longer pipe to move the intake point towards the lower front of the vehicle.

Who do I contact if I have more questions?

For further assistance, please email us at sales@tunersdepot.com