



## CPT COLD AIR INTAKE SYSTEM

### Installation Instructions

Part # CPT-544

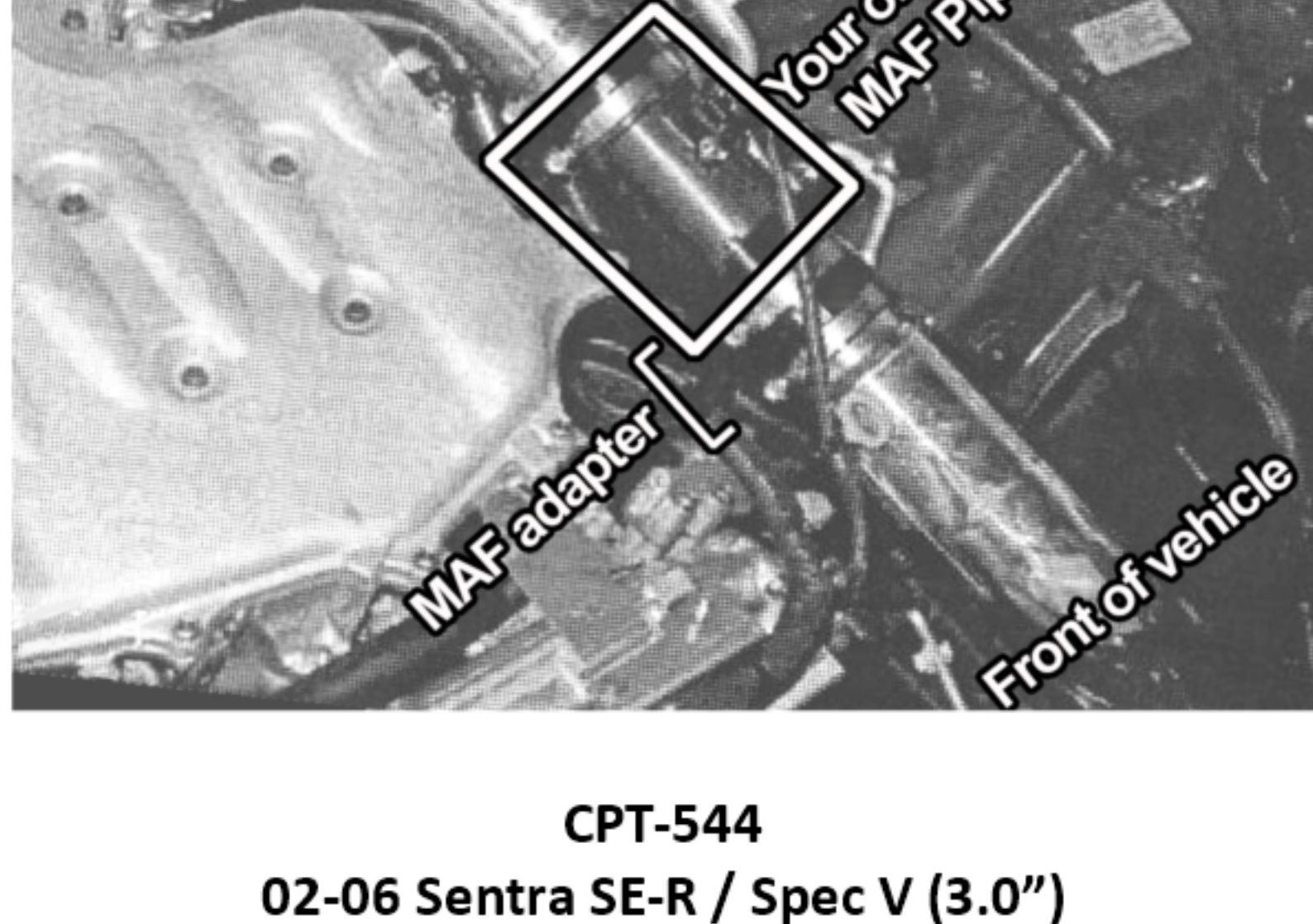
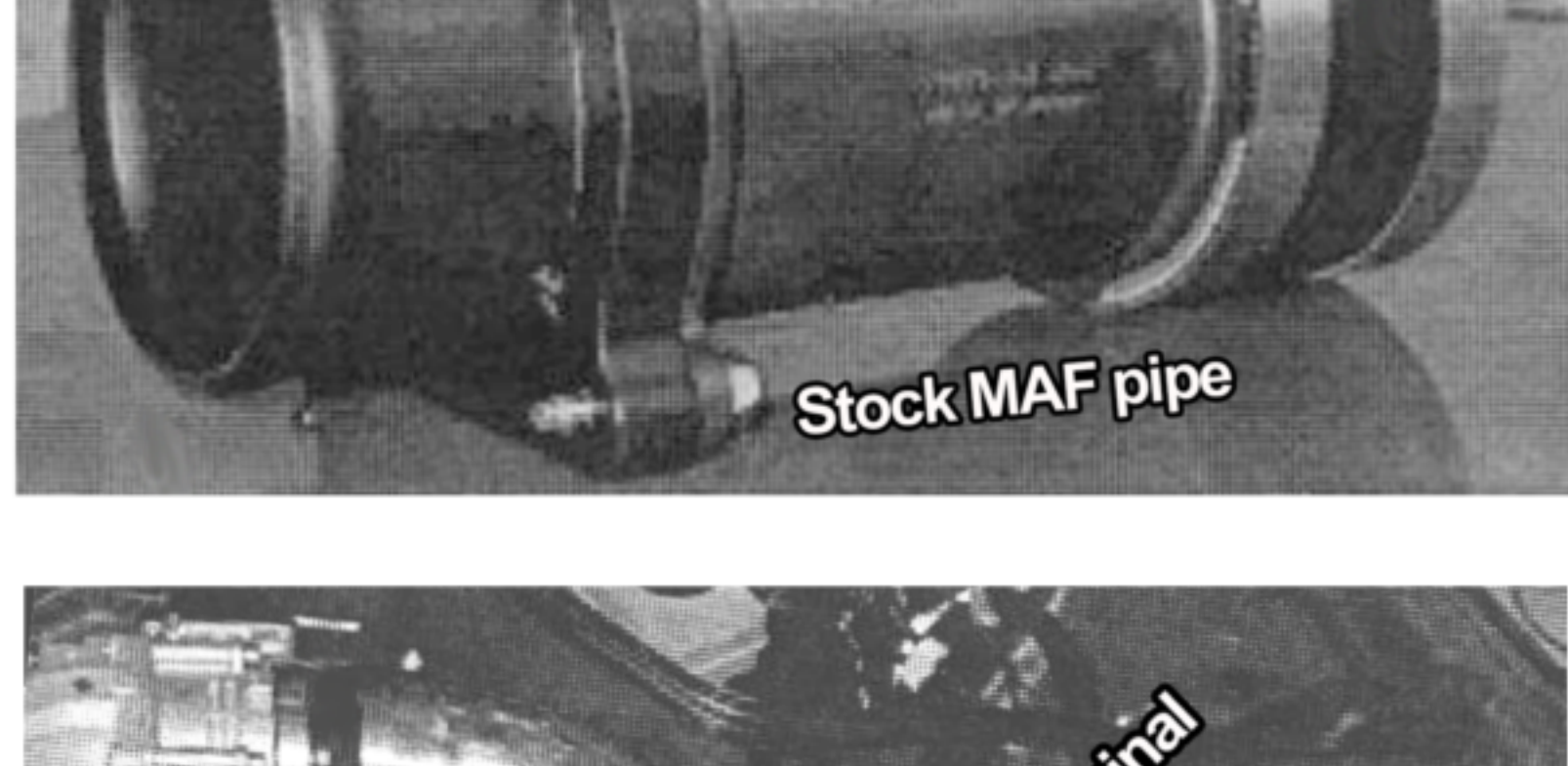
2 piece 3.00"

02-06 Sentra SE-R / Spec V

Check Point Tuning  
Fullerton, CA 92831

#### IMPORTANT NOTE!!

**THE STOCK MAF PIPE FROM YOUR ORIGINAL INTAKE SYSTEM, NEEDS TO BE INSTALLED BETWEEN OUR TWO PIPES**



**CPT-544**

**02-06 Sentra SE-R / Spec V (3.0")**

#### Installation Instructions

**We recommend you have a trained professional install this product. Please be sure you thoroughly understand ALL the instructions before attempting installation.**

**Note: This installation requires the removal and reinstallation of sensitive emissions related components. If you are not familiar with the installation and/or the operation of such components, please refer this installation to a qualified professional.**

1. Preparing the installation area
  - a. Make sure the vehicle is parked on a level surface.
  - b. Set the parking brake.
  - c. If the engine has run in the last hour – let it cool down.
  - d. Disconnect the negative battery terminal.
  - e. Jack up the front of the vehicle and support with appropriate jack stands. Optional: Remove the driver side tire.
  - f. Unfasten and remove the fender lining on the front driver side.
2. Removing the stock intake system

Make sure to label the stock parts and note their orientation prior to removing them from the vehicle. Be careful when disconnecting all sensors, wires and other sensitive electrical components, as they can easily be damaged.

- a. Unbolt the 3 bolts on the engine cover. Remove the engine cover from the vehicle.
- b. Optional: Unbolt the battery hold down. Disconnect the positive battery terminal. Disconnect and remove the battery from the vehicle.
- c. Disconnect the mass air flow sensor plug from the MAF sensor. Unclip the MAF sensor wire from the bracket on the MAF sensor. Disengage any other wires secured to the intake tube. Loosen the hose clamp on the stock intake tube. Loosen the clamp and disconnect the breather hose from the valve cover.
- d. Unclip the four clips on the air box lid. Disconnect the stock intake tube and air box lid from the vehicle. Disconnect the MAF Sensor and set aside with the stock screws and O-Ring for re-installation.
- e. Unbolt the single bolt securing the air box to the vehicle. Disconnect the clip holding the wire harness to the air box. Disconnect and remove the air box and the resonator tubes from the vehicle.
- f. From beneath the vehicle, unscrew the 2 bolts on the lower resonator box. Disconnect and remove the lower resonator box from the vehicle.

#### 3. Installing the Cold Air System

Do not completely tighten any hose clamps or mounting hardware until instructed to do so as minor adjustments might be needed during the installation. Make sure the CPT pipe and filter are clean and free of debris before installation.

- a. Take the MAF sensor, screws, and o-ring from step 2c and install to the included MAF adaptor.
- b. Install the MAF side to the longer end of the small intake pipe (the side closest the nipple) with a rubber boot and hose clamps.
- c. Install the other side of the intake pipe to the throttle body with the rubber reducer and hose clamps.
- d. Install the included rubber mount to the hole that was holding down the stock air box.
- e. Check that the remaining intake pipe will line up correctly with the rubber mount and clear the oval opening to the bottom of the vehicle. This hole may need to be cut to accommodate the intake pipe. Cut as necessary.
- f. Using a rubber boot and hose clamps, install the bracket side of the remaining pipe to the adaptor side of the MAF sensor.
- g. Connect the CPT filter to the end of the intake pipe. Adjust until proper orientation is achieved.
- h. Connect the included breather hose from the nipple on the top pipe to the valve cover, making sure to use hose clamps on both ends. Plug in the MAF wire plug to the MAF sensor.
- i. Adjust the pipe and filter until the intake system is not interfering with any other devices and adequate hood clearance is achieved.
- j. Tighten all clamps and connections.

#### 4 . Re-assembling the vehicle

- a. Reinstall the fender lining.
- b. If removed, reinstall the front driver side wheel.
- c. If removed, reinstall the battery and battery hold down.
- d. Lower the vehicle and retighten all connections.
- e. Reconnect the battery terminals, one at a time if both were removed.
- f. Start engine and perform a final inspection.

NOTE: Since the battery was disconnected, the vehicle may operate abnormally until it re-adapts to the idle curve. Do not be alarmed, as the vehicle will return to normal operation within 10 miles or so of driving.

**- END OF INSTRUCTIONS -**

#### FAQ

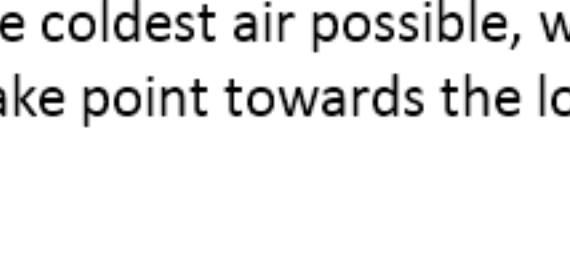
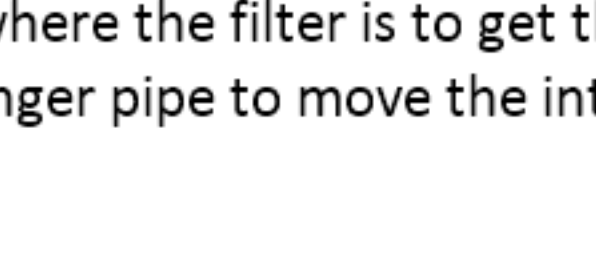
##### **Why does my car have a check engine light after installation?**

Disconnecting the battery during installation is an important step required to clear the ECU settings. After installation, it could take a mile or two for the vehicle to readjust to the new amount of airflow, and for the check engine light to clear.

If not, please check that the MAF sensor is facing the same direction as it was in your stock intake system, and that there are no holes or metal remnants near the MAF sensor that could be disrupting the air flow.

##### **Why is my pipe or filter off by 1-2 inches?**

Failure to install the vibramount correctly can throw off the alignment of the whole intake. The vibramount serves as a rubber spacer BETWEEN the intake bracket and your car (or heat shield) to absorb the vibrations that would otherwise damage and cause the bracket to break off.



##### **Why is this pipe bigger than my engine bay and stock intake?**

CPT intakes by design are often larger than your stock intake system. The point is to move the point where the filter is to get the coldest air possible, which usually means using a longer pipe to move the intake point towards the lower front of the vehicle.

##### **Who do I contact if I have more questions?**

For further assistance, please email us at [sales@tunersdepot.com](mailto:sales@tunersdepot.com)