



## CPT COLD AIR INTAKE SYSTEM

### Installation Instructions

Part #CP-550

2 piece 2.75"

08-13 Infinity G37 2dr/4dr 3.7L 6cyl

07-08 G35 4dr Sedan 3.5L 6cyl

Check Point Tuning  
Fullerton, CA 92831

CPT-550

08-13 Infinity G37 2dr/4dr 3.7L 6cyl

07-08 G35 4dr Sedan 3.5L 6cyl

### Installation Instructions

**We recommend you have a trained professional install this product. Please be sure to read ALL these instructions prior to installation.**

**Note: This intake pipe kit requires the removal and reinstallation of emissions related components. If you are not familiar with the installation and/or the operation of these components please refer this installation to a qualified professional.**

#### 1. Preparation

- Make sure the vehicle is parked on a level surface.
- Set the parking brake.
- Make sure the engine has cooled down for at least an hour.
- If your radio has a security code, make sure you have it recorded before you disconnect your vehicle's power.
- Disconnect the negative battery terminal.

#### 2. Removing the stock air intake system

Before removing any of the O.E. components label each individual part so that no components become mixed up during the installation process.

- Remove 4 bolts securing the front engine cover then remove engine cover.
- Remove all plastic clips and bolts secure front bumper then remove front bumper.
- Remove 3 bolts securing the windshield washer fluid reservoir.
- Remove the windshield washer fluid reservoir.
- Disconnect 2 electrical connectors and a black hose attached to the bottle.
- Empty the washer fluid bottle before you remove the motor and rubber grommet.
- Remove the horn and horn brackets by loosening 10mm nuts and bolts.
- Relocate the factory horn toward the front of the bumper beam.
- Remove the 2 intake resonator boxes on the driver and passenger side by prying on the mounting clips.
- On the passenger side, remove the metal bracket that was attaching the resonator box to the car.
- Remove the 10mm bolts attaching the 2 front air scoops to the car, then pinch the plastic clips with pliers to remove the air scoops.
- Loosen the hose clamps attaching the intake to the throttle bodies.
- Pinch the tension clamps attaching the crank case vent boxes to the stock intake on either side.
- Remove a 10mm bolt securing the driver side and passenger side air box.
- Remove the harness clips attached to the air box assemblies.
- Disconnect MAF sensor harnesses.
- Remove the factory air intake assemblies.
- Remove the 4 bolts attaching the 2 MAF sensors to the factory intakes, then remove the MAF sensors.

#### 3. Installing the CP Cold Air Intake

When installing the cold air intake system do not completely tighten the hose clamps or mounting tab hardware until instructed to do so later in these instructions. Be sure the CP Piping and Filter are clean and free of debris before beginning installation.

- Place the 2.75" straight hoses over each of the throttle bodies and secure using hose clamps.
- Install the stand offs into the rubber grommets located on the frame rails.
- Position the intake pipes with the brackets lining up to the standoffs then slide into the straight hoses that are attached to the throttle bodies and secure using hose clamps.
- Install a small section (approx. 1.75" section) of 17mm breather hose over the crank case breather boxes then over the breather ports on the intake pipes.
- Secure the intake pipe to the standoffs using washer and nuts.
- Install the MAF sensors into the intake piping and secure with the stock hardware.
- Reconnect the MAF sensor harnesses.
- Install the CP air filters onto the intake pipes and secure with hose clamps.
- Assemble the supplied windshield washer fluid bottle using the factory motor, rubber grommet, and top spout.
- Install the windshield washer fluid bottle and connect the electrical connectors and washer hose. Secure to the vehicle using the stock bolts.

#### 4. Re-assemble the vehicle

- Replace and reinstall the engine covers with the factory hardware.
- Remount the front bumper and secure using original plastic clips and bolts.
- Inspect the engine bay for any loose tools and check that all fasteners that were moved or removed are properly tightened.
- Reinstall the negative battery terminal.
- Start the vehicle and check for proper operation.
- Please note that your vehicles computer may act abnormally for the first few minutes of driving as it adjusts to the increased amount of airflow. Normal operation should resume after a few miles of driving.

**-END OF INSTRUCTIONS-**

### FAQ

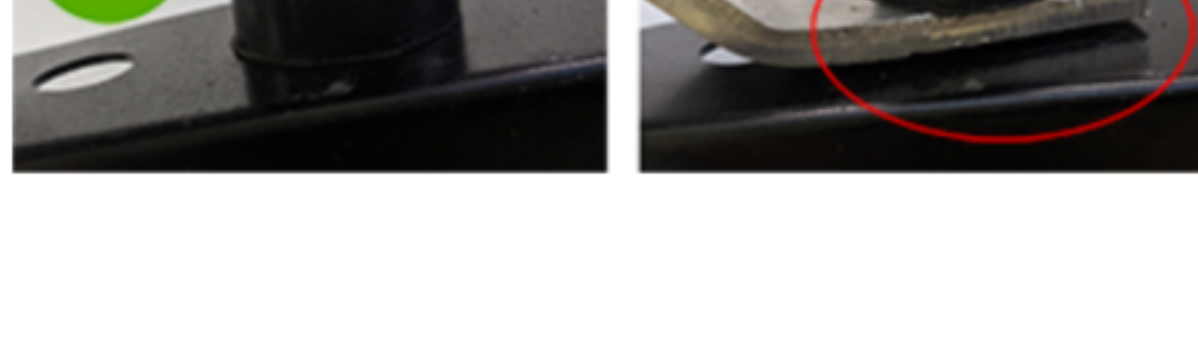
#### **Why does my car have a check engine light after installation?**

Disconnecting the battery during installation is an important step required to clear the ECU settings. After installation, it could take a mile or two for the vehicle to readjust to the new amount of airflow, and for the check engine light to clear.

If not, please check that the MAF sensor is facing the same direction as it was in your stock intake system, and that there are no holes or metal remnants near the MAF sensor that could be disrupting the air flow.

#### **Why is my pipe or filter off by 1-2 inches?**

Failure to install the vibramount correctly can throw off the alignment of the whole intake. The vibramount serves as a rubber spacer BETWEEN the intake bracket and your car (or heat shield) to absorb the vibrations that would otherwise damage and cause the bracket to break off.



#### **Why is this pipe bigger than my engine bay and stock intake?**

CPT intakes by design are often larger than your stock intake system. The point is to move the point where the filter is to get the coldest air possible, which usually means using a longer pipe to move the intake point towards the lower front of the vehicle.

#### **Who do I contact if I have more questions?**

For further assistance, please email us at [sales@tunersdepot.com](mailto:sales@tunersdepot.com)