



Part number PF5060

05-08 Chrysler 300

05-08 Dodge Magnum

06-08 Dodge Charger

5.7L, 6.1L V8

- 1- MR Tech Power-Flow cast intake (SR)
- 1- **Power Box- contents: PB400D-8**
  - 1- 8" Inverted top filter (A) (#1022)
  - 1- Main body, top and screen (B) (#15015)
  - 1- 4" velocity stack inlet (C) (#15016)
  - 1- Rect. front pre-filter screen (D) (#15018)
  - 4- m6 x 20mm button head bolts (E) (#6073)
- 1- **Power-box mounting bracket (#20077)**
  - 1- 6" 12mm vacuum hose (#3078)
  - 1- 3 3/8" x 3 3/4" step hose (#3135)
  - 1- 4" connecting hump hose (#3147)
  - 2- Power-band (.412)(.056) (#4005)
  - 2- Power-band (.462)(.064) (#4006)
  - 2- m6 x 20mm button head bolts (#6073)
  - 1- 1/2" plastic coupler (#8012)
  - 1- Rubber sensor grommet (#8026)
  - 1- 5 page Instruction



**Note:** The installation of this cold air intake does require mechanical skills. Removal of the front bumper requires loosening and removing several plastic plugs and screws that may be difficult. In addition to removing the bumper, you will also have to remove the air resonator box, battery and tray when beginning this installation. **Injen strongly recommends that this system be installed by a professional mechanic.**

**MR Technology, "The World's First Tuned Intake System!"**

**Optimum performance, Factory safe air/fuel ratio.**







**Figure 3**  
Stock air intake box and air intake duct shown above.



**Figure 4**  
Unscrew bolt from the stock air intake box



**Figure 5**  
Loosen the clamp from the air intake box and the clamp located on the throttle body. This will be necessary in order to remove the air duct.



**Figure 6**  
Once both clamps on the air intake duct have been loosened, continue to remove the air duct by pulling on the connection over the throttle body and the connection over the air box.



**Figure 7**  
Remove the stock hose connected to the oil fill reservoir as shown above.



**Figure 8**  
Once the fuel pressure regulator line and the bolt on the air box have been removed continue to pull the entire air intake assembly as shown above.



**Figure 9**  
Remove the stock grommet from the air box cleaner (A). Use a light oil or WD-40 to lube the inside grommet. This will make it easier to insert locating pin into the grommet (B).



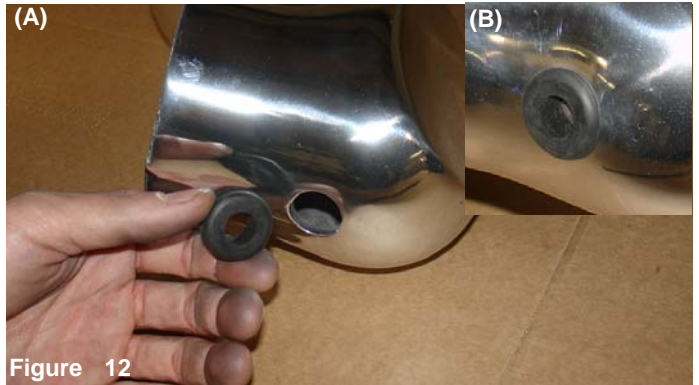
**Figure 10**  
Take the 3 3/8" x 3 3/4" step hose located in this kit and press the 3 3/8" end over the throttle body. Use two.412 power-clamps as shown in the picture above.





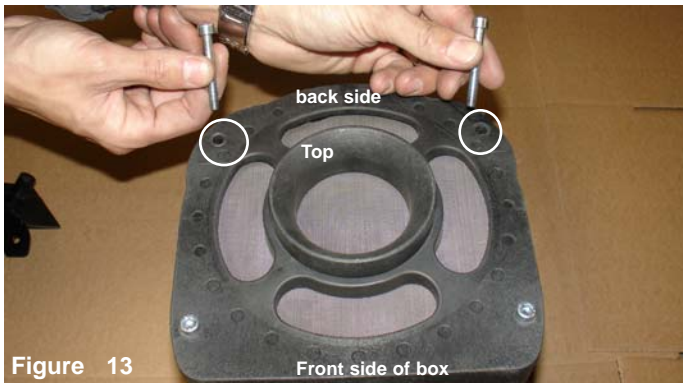
**Figure 11**

The step hose and clamps has now been installed, continue to tighten the clamp located on the throttle body.



**Figure 12**

Locate the sensor grommet in this kit and press it into the pre-drilled hole as shown above (A). Continue to press the sensor grommet into the pre-drilled intake hole until the top sits flush with the intake out side radius (B). Use or rub a dab of oil around the inside radius of the grommet prior to installing the sensor.



**Figure 13**

Remove the two stainless steel 45mm screws from the top of the power-box. This is where the power-box bracket will be located.



**Figure 14**

Once the 45mm screws have been removed, continue align the black powder coated power-box bracket. The hole pattern will line up once the right screws have been removed.



**Figure 15**

The power-box bracket is now lined up and in place, the 45mm screws are reinstalled to hold the bracket in place.



**Figure 16**

The 4" hump hose can placed on the Power-box or cast intake (see figure 19) Press the 4" hump hose over the velocity stack base. Use two .462 clamps on the straight hose, tighten the hose on the velocity stack for now.



**Figure 17**

Place the cast intake into the engine compartment. align the outlet end to the throttle body step hose then press the intake into the step hose.



**Figure 18**

Once the intake has butted up against the step hose stop, continue to semi-tighten power-band.



**Figure 19**

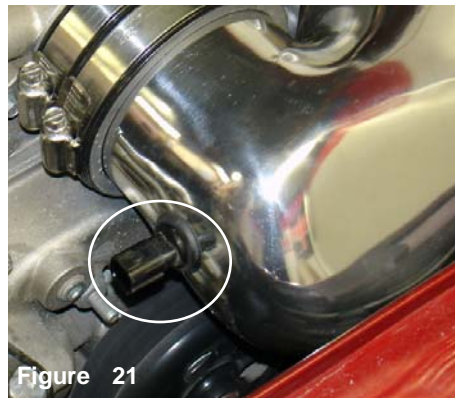
Place the power-bands over the 4" hump hose and press the straight hose over the end of the intake.





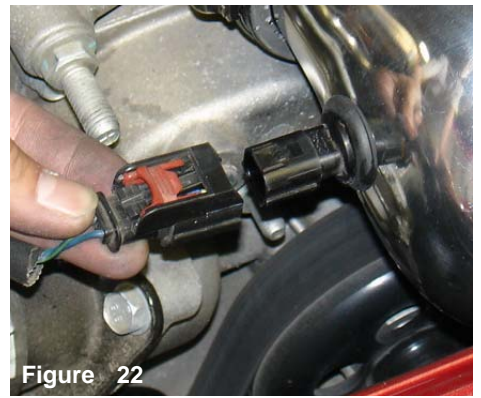
**Figure 20**

The air temperature sensor is lined up to the grommet and pressed in until it sits flush over the grommet.



**Figure 21**

The air temperature sensor is inserted into the intake grommet until it sits flush over the grommet.



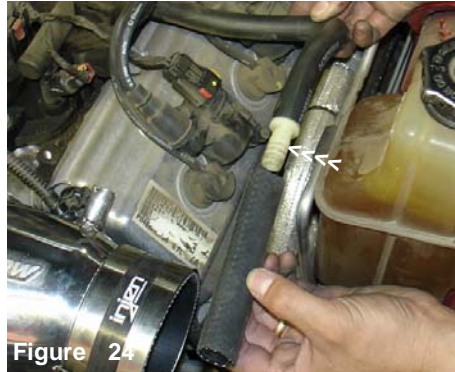
**Figure 22**

The harness plug is now pressed over the air temperature sensor. Press the plug over the sensor until you hear the two snap together.



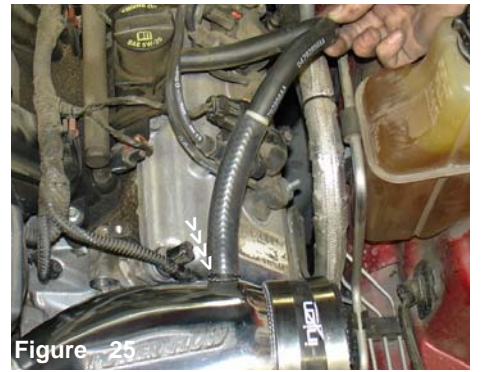
**Figure 23**

The 1/2" coupler is pressed into the stock crank case hose as shown above.



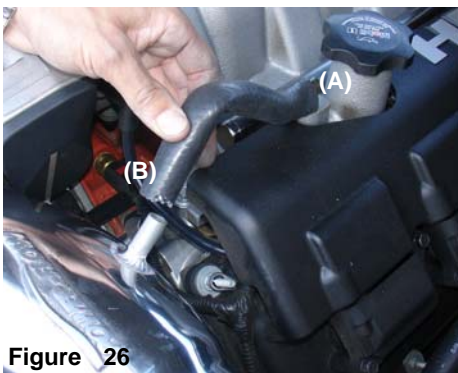
**Figure 24**

The 6"-12mm hose is inserted over the 1/2" coupler.



**Figure 25**

The 6"-12mm hose is inserted over the 1/2" coupler and pressed over the 1/2" intake port as shown above.



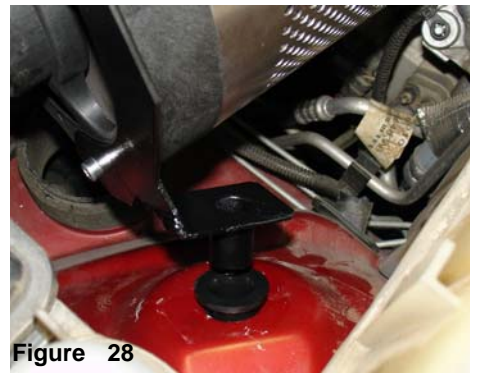
**Figure 26**

Press one end of the 6"-12mm hose over the crank case port (A). Press the other end over the 1/2" intake port as shown above (B).



**Figure 27**

The power-box is lowered and aligned in the engine compartment.



**Figure 28**

The power-box bracket locating pin is pressed into the stock grommet until the base sits flush over the grommet.



**Figure 29**

Installation of the Hemi 5.7L is complete. Enjoy the added performance and power of the world's first tuned intake system. Ten years of engineering continues to set higher standards.



**Figure 30**

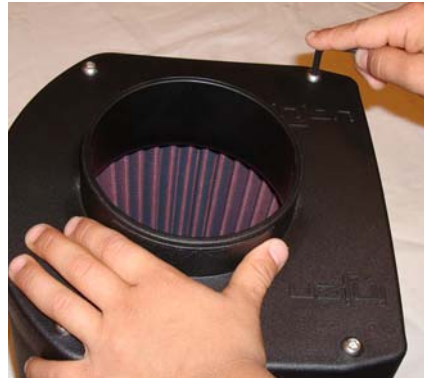
Congratulations! You have just completed the installation of the MR Tech Power-Flow intake system. Periodically, check the fitment of this intake system, failure to do so will void the warranty.



## Assembly and disassembly instructions for the Power Box for the purpose of cleaning screens and filter.



Here are the four-m6 x 20mm bolts that will be removed from the velocity stack base located on the corners of the base.



Unbolt the four- m6 x 20mm screws from the velocity stack base located to the center of the base. Now separate the base from the velocity stack.



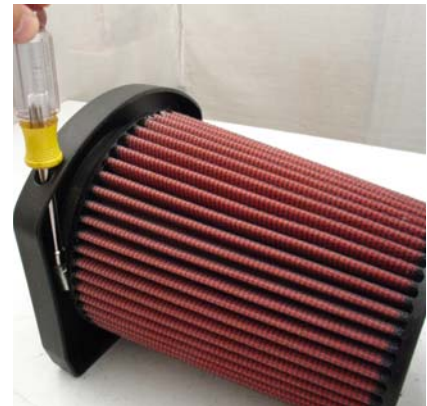
The four m6 x m20 bolts have been removed from the top of the velocity stack,



Pull the velocity stack base with the filter that is attached to the velocity stack.



The velocity stack with filter is now out of the power box body.



Loosen the clamp on the filter neck in order to separate the filter from the velocity stack.



Once you have loosened the filter neck clamp, continue to pull the filter from the velocity stack,



The rectangular pre-filter screen is now slipped out of the channel along the body of the power box.



Here is a group shot of the components that goes into the power-box. The filter and screens can now be cleaned with a simple shop-vac.

1. Upon completion of the installation, reconnect the negative battery terminal before you start the engine.
2. Align the entire intake system for the best possible fit. Once the intake has been properly fitted continue to tighten all nuts, bolts and clamps.
3. Periodically, recheck the alignment of the intake system and make sure there is proper clearance around and along the length of the intake. Failure to follow proper maintenance procedures may cause damage to the intake and will void the warranty.
4. Start the engine and listen carefully for any odd noises, rattles and/or air leaks prior to taking it for a test drive. If any problems arise go back and check the vacuum lines, hoses and clamps that maybe causing leaks or rattles and correct the problem.
5. Check the filter for excessive dirt build up. Clean or replace the filter with an original Injen filter. Congratulations! You have just completed the installation of the best intake system sold on the market. Enjoy the added power and performance of your new intake system.